



# 20" x 18" Wall Hung Lavatory Zurn One Sensor Hand Washing System Z.L7.S.HYD

TAG \_\_\_\_\_

## ARCHITECTURAL & ENGINEERING SPECIFICATION

Complete sensor hand washing system includes 20"x18" vitreous china wall hung lavatory with ZG6955-TMV-1, ADA compliant, hydropowered, chrome plated sensor faucet with thermostatic mixing valve, Z8743-PC chrome plated cast brass solid top grid strainer, Z8700-8B-PC series P-trap, and Z8804-XL-LR-LK-PC series supply stop kit 0.5 GPM.

## PRODUCT FEATURES

- 20" [508 mm] x 18" [457 mm] vitreous china lavatory
- Wall hung lavatory provided with wall hanger bracket or for use with concealed arm carrier systems
- Front overflow
- Infrared convergence-type proximity sensor
- 30 second time out feature
- Shipping weight: 60lbs
- Chrome-plated faucet cast brass body
- Thermostatic mixing valve to help prevent scalding
- Complete commercial grade grid drain, P-Trap, supply

## COMPLIANCE AND CERTIFICATION:

Meets the American Disabilities Guidelines and ANSI A117.1 requirements when installed according to these requirements.

- Fixture - Complies with ASME A119.2 / CSA B45.1
- Faucet - Complies with ASME A112.18.1 / CSA B125.1



## ZURN ONE SYSTEM PACKOUT INCLUDES:

### FIXTURE - Z5344:

20" x 18" vitreous china wall hung lavatory with 4" [102mm] center faucet holes. Provided with hanger plate and holes for concealed arm carrier systems.

### FAUCET - ZG6955-TMV-1:

ADA compliant, hydropowered, chrome plated sensor faucet with point of use thermostatic mixing valve to prevent scalding and a 0.5 gpm vandal-resistant nonaerated outlet.

### Z8743-PC:

Chrome-plated cast brass solid top, open grid, P.O. plug. Furnished with 5" [127mm] long, chrome plated brass 17 gauge tailpiece and chrome-plated cast brass locknut for sink depth up to 2 1/4" [64mm]

### Z8700-8B-PC:

Chrome-plated cast body 1 1/4" [320.5mm] P-trap with cleanout, tubular wall bend, brass nuts and shallow escutcheon with compression inlet

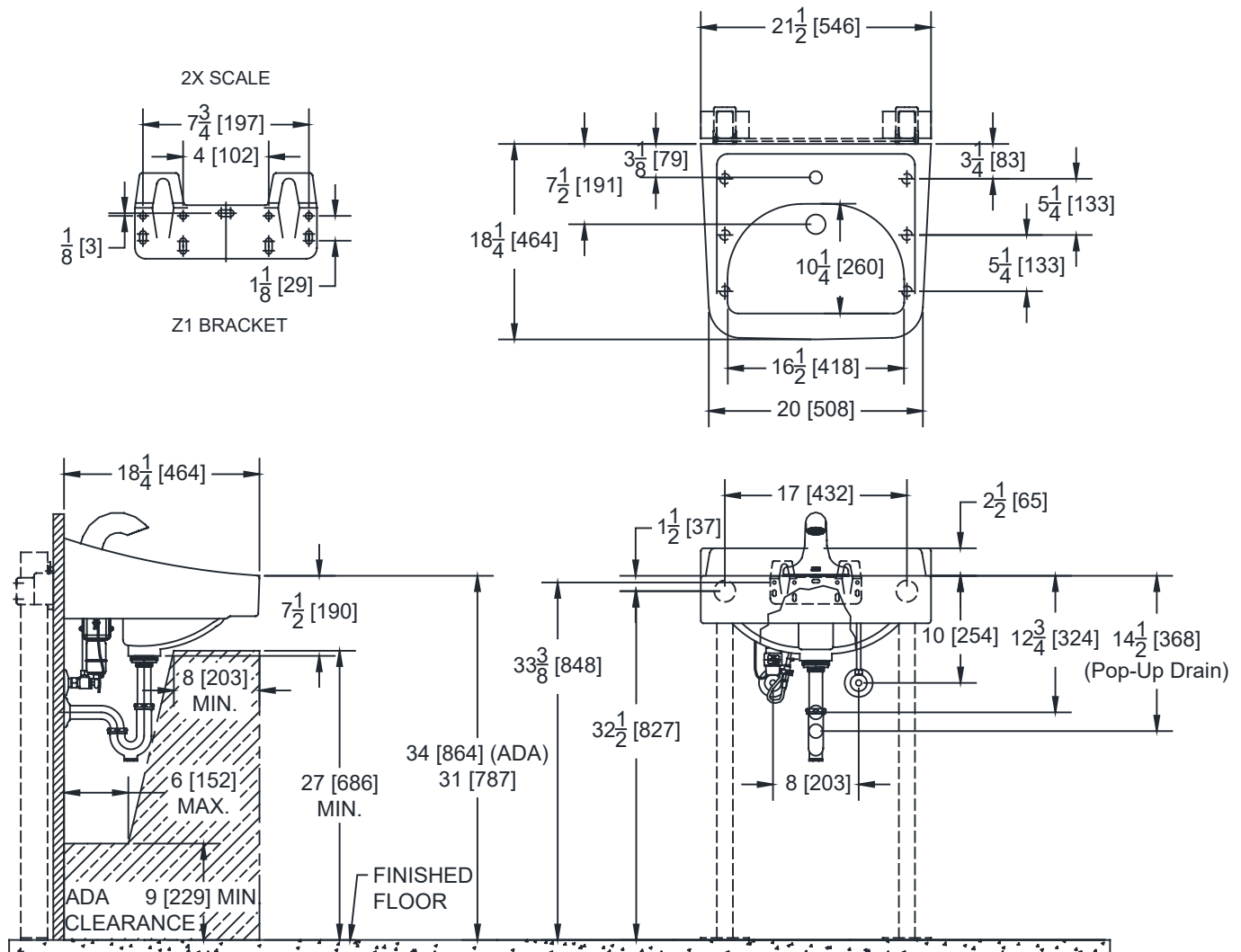
### Z8804-XL-LR-LK-PC:

Chrome plated solid brass angle stop with 1/2" [13mm] NOM compression inlet, 3/8" [10mm] OD compression outlet, loose key, chrome plated copper riser tubes and chrome plated inlet flanges.

ARCHITECTURAL & ENGINEERING APPROVAL

The information contained in this document is subject to change without notice.  
Please contact Zurn for most up to date information.

## Rough-in / Overview dimensions





# Z1231EZ-WL

UNIVERSAL CONCEALED ARM CARRIER SYSTEM FOR WALL HUNG  
LAVATORY W/ ADJUSTABLE UPRIGHTS & HEADER PLATES

SPECIFICATION SHEET

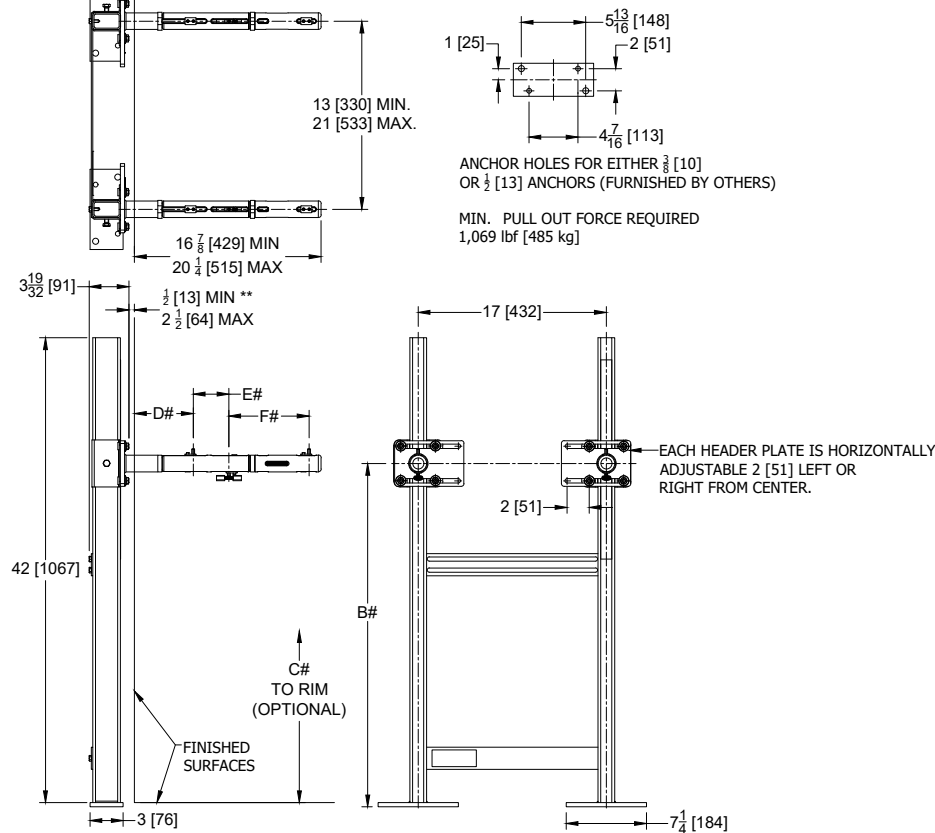
TAG \_\_\_\_\_

Design and Dimensional Data (inches and [ mm ]) are Subject to Manufacturing Tolerances and Change Without Notice

NOTES:

# REFER TO ROUGH-IN GUIDE OF SPECIFIC FIXTURE FOR DIMENSIONS.

\*\* WITH STANDARD SLEEVE LENGTH OF 3 [76].



Product No.	Approx. Wt. Lbs. [kg]
Z1231EZ	43 [19]

## ENGINEERING SPECIFICATION: ZURN Z1231EZ

Z1231EZ Universal Carrier System designed to reduce installation time and provide job site flexibility. Zurn's Concealed Arm Carrier comes standard with Dura-Coated, ductile iron universal arms, including leveling screws, and soft-set elastomeric locking devices pre-installed. Reversible header plates with slots and integral welded arm sleeves that provide 2" [51mm] of horizontal adjustment per plate, allowing for horizontal post anchoring adjustment from 13"-21" [330 mm - 533 mm]. Uprights, rigid spacing plates, and header plates are factory assembled for easy installation. Carrier system comes complete with Dura-Coated uprights constructed of carbon-steel tubing that meet ASTM A500 Grade C standards. Uprights also include welded steel plate mounting feet that feature separate bolt patterns for use with either (2) 3/8" [10 mm] or 1/2" [13 mm] anchors per leg. Carrier includes lower and upper rigid spacing plates for a spacing of 17" [432 mm]. Upper spacing plate includes horizontal slots for securing water supply and vent piping. Zurn's Universal carrier systems exceeds load and deflection requirements when tested in accordance to ASME Standard A112.6.1M up to a 250 lb [113kg] static load rating at all rough-in positions, and meets OSHPD spacing requirements for two anchor per upright installation.

### PREFIXES

\_\_\_ Z Dura-Coated System with Support Plate

### SUFFIXES

\_\_\_ -AL Adapter Lug  
\_\_\_ -D Back to Back System  
\_\_\_ -EXT Extension Sleeve 3-5 [76-127]  
\_\_\_ -WL Waste Line Sleeve

⚠ **WARNING:** Cancer and Reproductive Harm - [www.P65Warnings.ca.gov](http://www.P65Warnings.ca.gov)

⚠ **ADVERTENCIA:** Cáncer y daño reproductivo - [www.P65Warnings.ca.gov](http://www.P65Warnings.ca.gov)

⚠ **AVERTISSEMENT:** Cancer et effets néfastes sur la reproduction - [www.P65Warnings.ca.gov](http://www.P65Warnings.ca.gov)

Zurn Industries, LLC | Specification Drainage Operation  
1801 Pittsburgh Avenue, Erie, PA 16502, Ph. 855.663.9876

In Canada | Zurn Industries Limited  
7900 Goreway Drive, Unit 10, Brampton, Ontario L6T 5W6, Ph. 877.892.5216

[www.zurn.com](http://www.zurn.com)

Rev. C  
Date: 12/30/22  
C.N. No.144897  
Patent [zurn.com/patents](http://zurn.com/patents)  
Prod. | Dwg. No. Z1231EZ



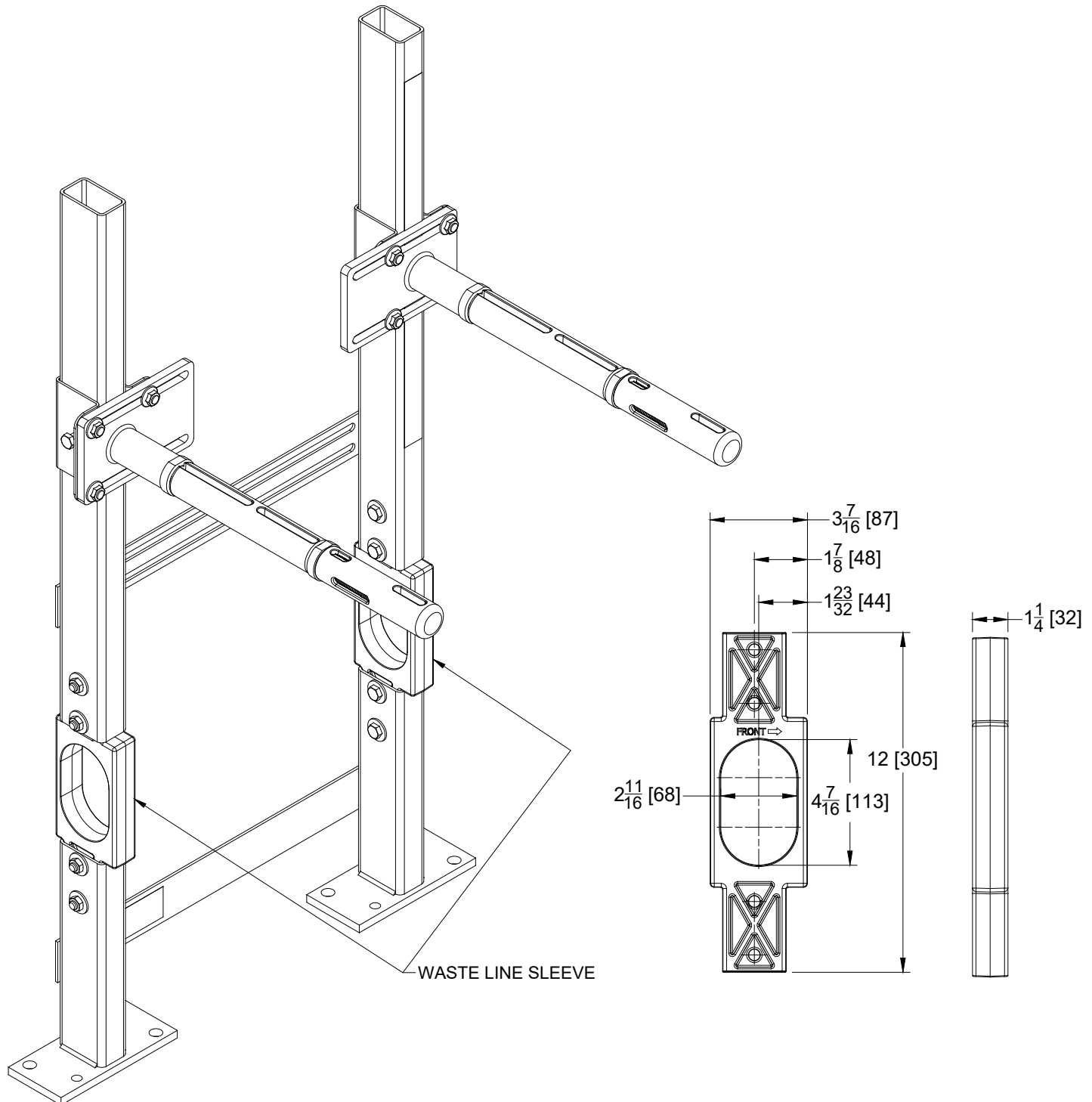
# -WL Option for Z1231EZ

UNIVERSAL CONCEALED ARM CARRIER SYSTEM FOR WALL HUNG  
LAVATORY W/ WASTE LINE SLEEVE

SPECIFICATION SHEET

TAG \_\_\_\_\_

Design and Dimensional Data (inches and [ mm ]) are Subject to Manufacturing Tolerances and Change Without Notice



## ENGINEERING SPECIFICATION: ZURN Z1231EZ-WL

Dura-Coated cast iron waste line sleeve designed for use with Z1231EZ Lavatory Carrier. Complete with integral positive stops for proper assembly with mating uprights and securing hardware. Sleeve allows for up to a 2 [51] waste line to pass through while meeting the strength and deflection criteria of the carrier system, as required by ASME A112.6.1M.

Zurn Industries, LLC | Specification Drainage Operation  
1801 Pittsburgh Avenue, Erie, PA 16502, Ph. 855.663.9876

In Canada | Zurn Industries Limited  
7900 Goreway Drive, Unit 10, Brampton, Ontario L6T 5W6, Ph. 877.892.5216

[www.zurn.com](http://www.zurn.com)

Rev. A  
Date: 12/30/22  
C.N. No.144897  
Patent [zurn.com/patents](http://zurn.com/patents)  
Prod. | Dwg. No. Z1231EZ-WL